

COLONIAL COURT



Colonial Court Drive—Plan B

Colonial Court is Southwest County's newest Energy Star neighborhood, offering a remarkable energy package that helps keep electric bills low. This particular home offers a reverse basement layout. Formal Dining Room, Kitchen, Study, Living Room, and Master Suite all on 1st Floor. Upstairs offers huge Rec Room, 2 large Bedrooms, and a Full Bath. Close in County location keeps dining, shopping, and health care all at your fingertips.



**Another *Winter-Fields,*
LLC Development
Southwest Roanoke
County**

- ◆ 2600 Finished square ft.
 - ◆ One level living
- ◆ Huge Rec Room upstairs
- ◆ Certified Energy Star home
- ◆ Southwest Roanoke County

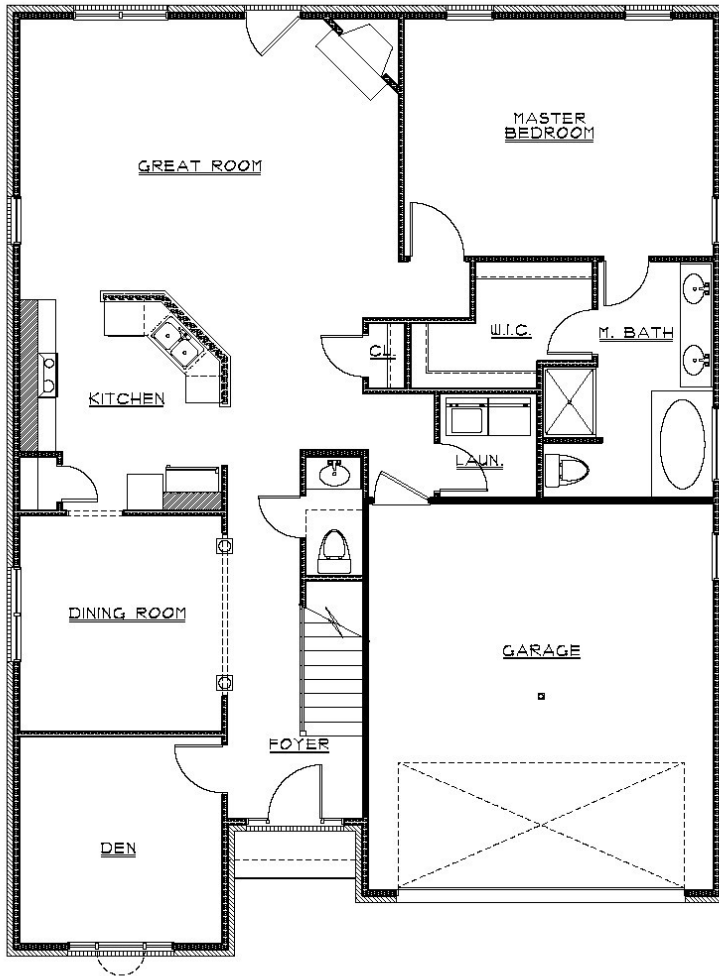
www.FieldsConstruction.com

Fields
CONSTRUCTION, INC.
ROANOKE, VA

540.387.4580 phone
540.387.4581 fax

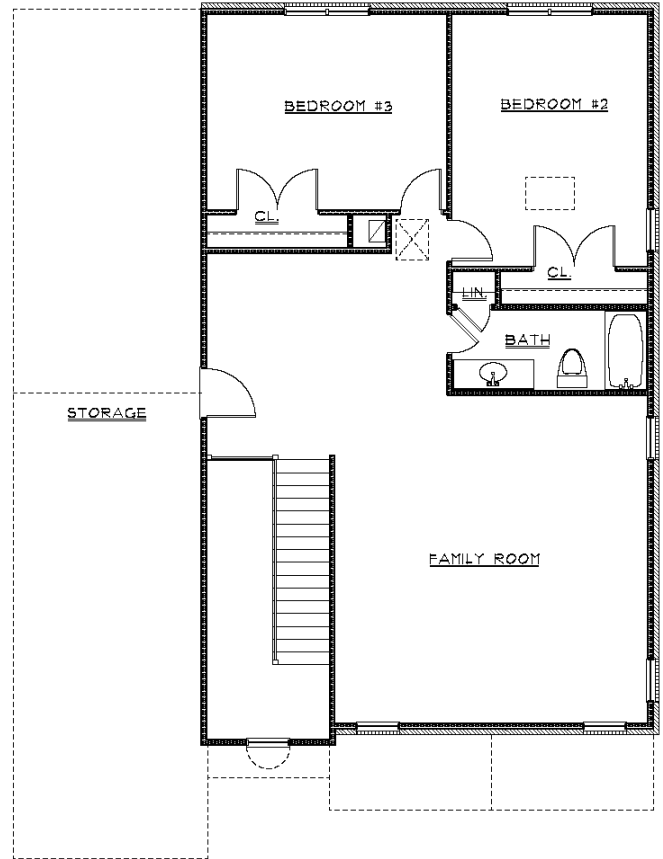
CHANTILLY PLACE LUXURY PATIO HOMES

Apx. 2600 sqft of Living Space
“Reverse Basement Plan” with Study



FIRST FLOOR PLAN

1st Floor



SECOND FLOOR PLAN

2nd Floor

Additional floor plans available with options and upgrades. This community offers floor plans ranging in square footage from 1800 square feet to 2600 square feet. Contact Fields Construction or our REALTOR for available plans and pricing.