

CHANTILLY PLACE LUXURY PATIO HOMES



Chantilly Place—Large unit

Chantilly Place on Starkey Road is Southwest County's newest luxury town home development. Conveniently located just seconds from The Roanoke Athletic Center, loads of shopping & dining, and interstate 581. This floor plan features Formal Dining Room with wainscoting, Kitchen with island and bar, Master suite on 1st floor, 2 huge bedrooms and loft upstairs. Hardwood floors throughout first floor and granite counter tops in Kitchen.



**Another *Winter-Fields*,
LLC Development
Southwest Roanoke
County**

- ◆ 2600 Finished square ft. of living space
 - ◆ Master Suite on 1st floor
 - ◆ Spacious loft and 2 BR's up
 - ◆ Double Car Garage
 - ◆ Southwest Roanoke County

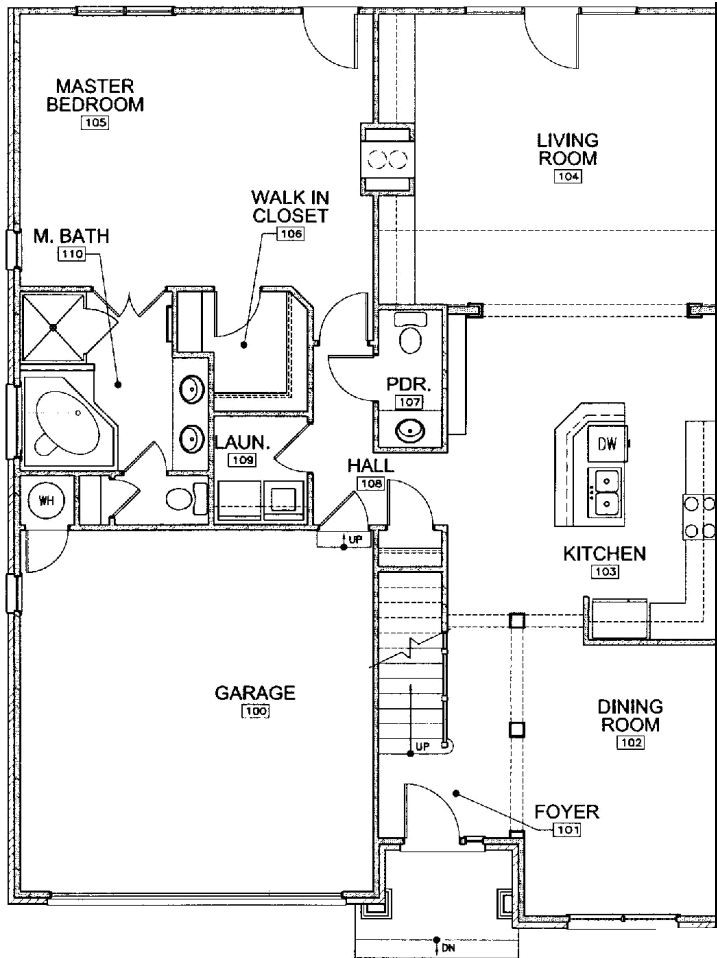
www.FieldsConstruction.com

Fields
CONSTRUCTION, INC.
ROANOKE, VA

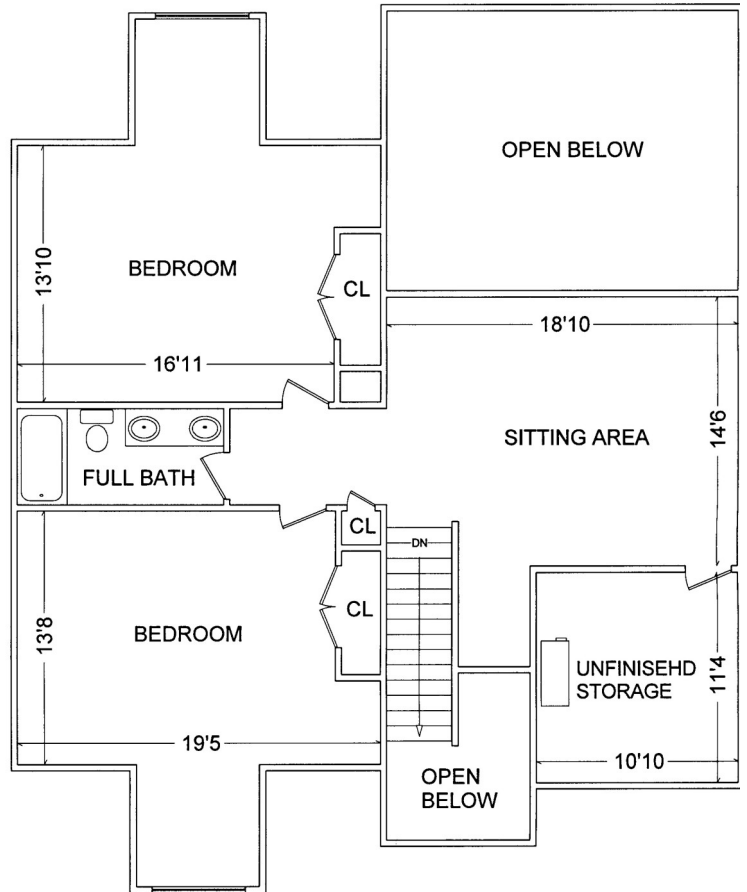
540.387.4580 phone
540.387.4581 fax

CHANTILLY PLACE LUXURY PATIO HOMES

5614 Rockbridge Court, 2600 Square foot plan



1st Floor



2nd Floor

Additional floor plans available with options and upgrades. This community offers floor plans ranging in square footage from 1600 square feet to 2600 square feet. Contact Fields Construction or our REALTOR for available plans and pricing.

